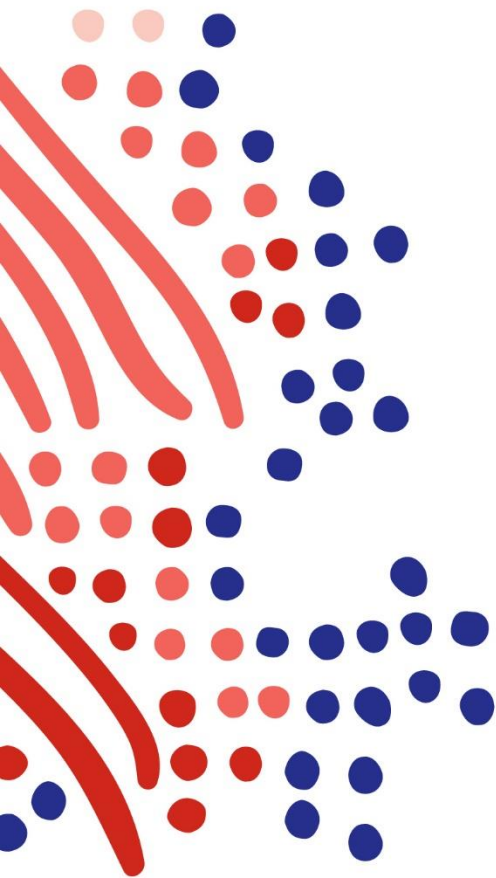




ADP's Pay-by-Pay[®] Premium Payment Report



Insight ... it's one of the many benefits you'll receive by managing your workers' compensation premium payments with Pay-by-Pay.


As an ADP Pay-by-Pay client, you'll have access to a convenient management report* each time you run payroll. The report contains detailed employee-level information that allows you to track and manage workers' compensation premiums paid.

If you are not an ADP Pay-by-Pay client, you may be running the risk of unplanned expenses and a time-consuming year-end audit.

Pay-by-Pay Premium Payment Report:

- 1 Provides access to information at the employee, state and class-code level – allowing you to better account for your workers' compensation expenses
- 2 Helps improve the accuracy of your monthly premiums and reduce the impact of your year-end audit variance
- 3 Gives you the breakdown of your payment such as: state assessments, surcharges, and taxes

ADP's Pay-by-Pay[®] Premium Payment Report



View Critical Data / Be Prepared Come Audit Time / Save Time & Effort
In addition to enjoying the benefits of ADP's Pay-by-Pay Premium Payment Program, we'll like you to enjoy the peace of mind that detailed reporting offers. The Pay-by-Pay Premium Payment Report is a convenient management report that will be provided to you each time you run payroll.*

01 Employee Detail: Provides information on employee including name, contact number, status, class code, state in which the employee is working.

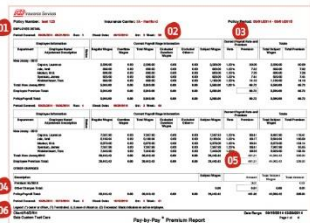
02 Current Payroll Wage Information: Displays all of the employee's earnings, and what is subject to and excluded from workers' compensation premium calculation.

03 Current Payroll Rate and Premium: Calculation of the current subject wages multiplied by the rate for the class code for this payroll.

04 Other Charges: Lists additional payments other than employee-level premium such as state assessments, surcharges, or taxes included on your Policy Information page.

05 Total Charges This Period: Highlights the total premium that will be debited from the employer's bank account.

06 Employee Status Legend: Describes the value listed in the Employee Status column and what it means.



Page 1 of the report will always show employee level activity for this payroll / current payroll. [See page 2 for additional features.](#)

Just one more reason to choose ADP's Pay-by-Pay to help manage your workers' compensation premium payments. Contact me today to learn more!



*The Pay-by-Pay[®] Premium Payment Report contains confidential employee payroll information.

This material covers ADP's Pay-by-Pay Premium Payment Program, a payroll enhancement feature of ADP's payroll processing services and does not involve the offer or sale of any insurance products. All insurance will be offered and sold only by licensed agents or licensed insurance partners of Automatic Data Processing Insurance Agency, Inc. (ADPIA[®]), an ADP affiliate. 1 ADP Blvd, Roseland, NJ 07068. CA license #0004044. Licensed in 50 states. Clients must be using ADP's tax filing service to take advantage of ADP's Pay-by-Pay Premium Payment Program. ADP, the ADP logo, ADPIA and Pay-by-Pay are trademarks of ADP, LLC. Copyright © 2019 ADP, LLC. All rights reserved.